



On the Path to Arizona's Next Gold Mine



JUNE 2022

Notes

Forward Looking Statement

Information set forth in this presentation may contain forward-looking statements. Forward-looking statements are statements that relate to future, not past, events. In this context, forward-looking statements often address a company's expected future business and financial performance, and often contain words such as "anticipate", "believe", "plan", "estimate", "expect", and "intend", statements that an action or event "may", "might", "could", "should", or "will" be taken or occur, or other similar expressions. By their nature, forward-looking statements involve known and unknown risks, uncertainties and other factors which may cause our actual results, performance or achievements, or other future events, to be materially different from any future results, performance or achievements expressed or implied by such forward-looking statements. Such factors include, among others, the following risks: the risks associated with outstanding litigation, if any; risks associated with project development; the need for additional financing; operational risks associated with mining and mineral processing; fluctuations in uranium, gold and other commodity prices; title matters; environmental liability claims and insurance; reliance on key personnel; the potential for conflicts of interest among certain officers, directors or promoters with certain other projects; the absence of dividends; competition; dilution; the volatility of our common share price and volume; and tax consequences to U.S. Shareholders. Forward-looking statements are made based on management's beliefs, estimates and opinions on the date that statements are made and the Company undertakes no obligation to update forward-looking statements if these beliefs, estimates and opinions or other circumstances should change. Investors are cautioned against attributing undue certainty to forward-looking statements.

Dr. D.R. Webb, B.A.Sc., M.Sc., Ph.D., P.Geo. P.Eng. is the Q.P. within the meaning of NI 43-101 and has reviewed and approved the technical content of this presentation.

Capital Structure

As of June 1st, 2022

Stock Symbol	TSX.V: GMV OTCQB: GMVMF
Shares Issued and Outstanding	70,845,165
Warrants	1,536,167
Options	4,780,000
Fully Diluted	77,161,332

Shareholder Breakdown

Largest Shareholder Group	58% <i>7 shareholders own 35M of 60M shares I&O</i>
Retail	22%
Management & Advisors	20%

Investment Highlights

1. High-Quality Gold Deposit:

Focused on developing the 100% owned Mexican Hat Gold Project in S.E. Arizona

2. Positive Preliminary Economic Assessment:

Reports 10-year mine life, low CAPEX & very strong NPV

3. Developing Ounces-in-the-Ground:

Mexican Hat: USD\$153 million. NPV (-5% discounted) from 52,520 oz/yr for 10 years (*Pre-tax and at USD\$1,600 oz/year price*)

4. Project Advancement:

Conversion Drilling 2022: (from Inferred to M&I) 30-35 drill hole program including 7,000 metres of drilling to twin holes previously explored by Placer Dome USA

5. Experienced Team

Combined exploration, mine development, permitting, operating, and capital markets experience

6. Safe, Mining Friendly Jurisdiction

Arizona is a mining-friendly jurisdiction and the 3rd most prolific mining state in the US, generating over 40,000 jobs for the State





Mexican Hat Project

Arizona, USA

Mexican Hat Project Overview

- ✓ The project spans ~5,000 acres, forming one of the most promising gold development opportunities in the western USA
- ✓ The project is a low sulphidation, structurally controlled epithermal gold deposit
- ✓ Primary mineralization consists of oxides with gold in a metasomatic assemblage of carbonate, epidote, chlorite & minor silica along fractures & fault zones within a tilted conformable package of Tertiary rock
- ✓ All rocks are oxidized to at least 200m with minor weakly oxidized rocks report 95% gold recoveries
- ✓ Mineralization at Mexican Hat is open at depth (to depth, to the north and southeast)
- ✓ 158 reverse circulation and rotary drill holes, 45 diamond drill holes and 149 trenches have been completed on the property since 1989
- ✓ SRK Engineering conducting baseline environmental studies
- ✓ All rocks are oxidized to at least 200m with minor weakly oxidized rocks report 95% gold recoveries



★ *The Mexican Hat Gold property is located in Cochise County, Arizona - 72 miles ESE of Tucson*

Mexican Hat PEA Highlights



10 year
Life of Mine



\$100
Million NPV
5% after tax at
\$1,600/oz gold



29.3% IRR
after tax at
\$1,600/oz gold



\$67.8 Million
CAPEX



525,000 ounces
LOM production



52,500 ounces
Annual
Production



1.87 Strip
Ratio LOM



Resource
Expansion
Potential

Pre-tax and at USD\$1,600 oz/year price

PEA Summary:



- ✓ Current mine life of 10 years with a 1-year pre-production period – OPEN TO EXPANSION
- ✓ Life of mine (LOM) head grade of 0.58 g/t gold
- ✓ Low LOM Strip Ratio of 1.87
- ✓ Average Annual Gold Production of 52,250 ounces
- ✓ Base case: USD\$1,600 oz gold
- ✓ Pre-tax IRR-39.4% Payback-2.8 years
- ✓ Pre-tax NPV (-5% discounted): USD\$153 million
- ✓ Capex: USD\$67M (including \$12M contingency)
- ✓ Estimated cash cost of production: \$951 per ounce

PEA Qualified Personnel:

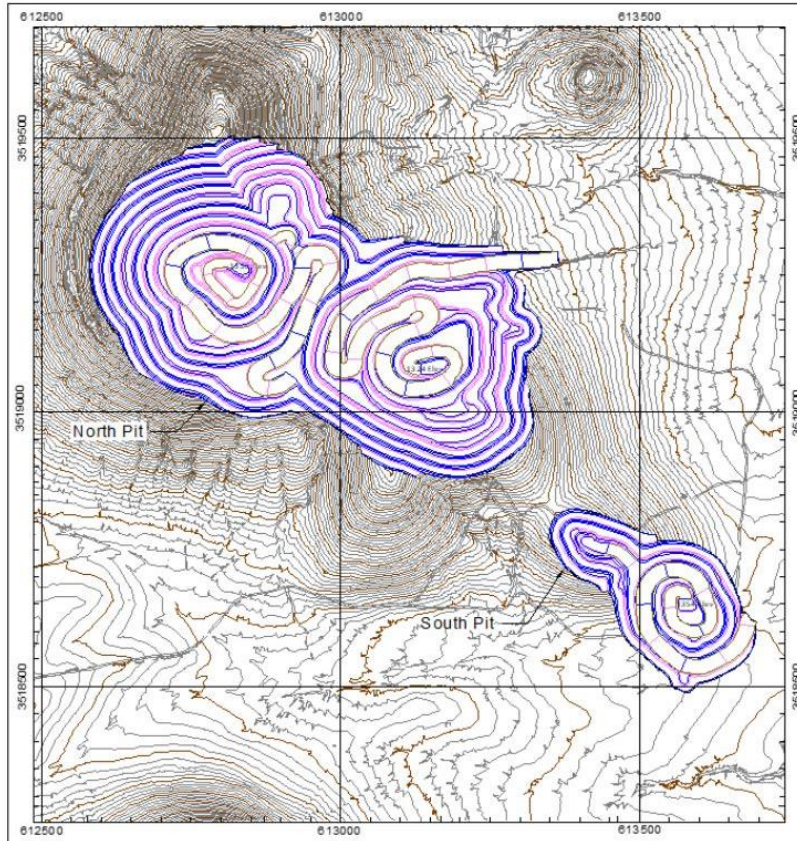
- ✓ Samuel Engineering, Inc. (Project lead)
- ✓ RESPEC (Mining)
- ✓ Tierra Group International, Ltd. (Pad design and loading)
- ✓ Golder Associations, Inc. (Environmental and water)

PEA Price Sensitivity Table

USD \$1,900	
Post Tax	Pre Tax
IRR 44.50%	IRR 58.50%
*NPV 0% \$ 264,330	*NPV 0% \$ 375,720
-5% \$ 182,492	-5% \$ 265,668
-8% \$ 146,778	-8% \$ 217,612
-10% \$ 127,051	-10% \$ 191,042
-12% \$ 109,979	-12% \$ 168,026

USD \$2,100	
Post Tax	Pre Tax
IRR 53.6%	IRR 70.0%
*NPV 0% \$ 338,128	*NPV 0% \$ 478,713
-5% \$ 237,204	-5% \$ 342,041
-8% \$ 193,177	-8% \$ 282,386
-10% \$ 168,854	-10% \$ 249,405
-12% \$ 147,802	-12% \$ 220,833

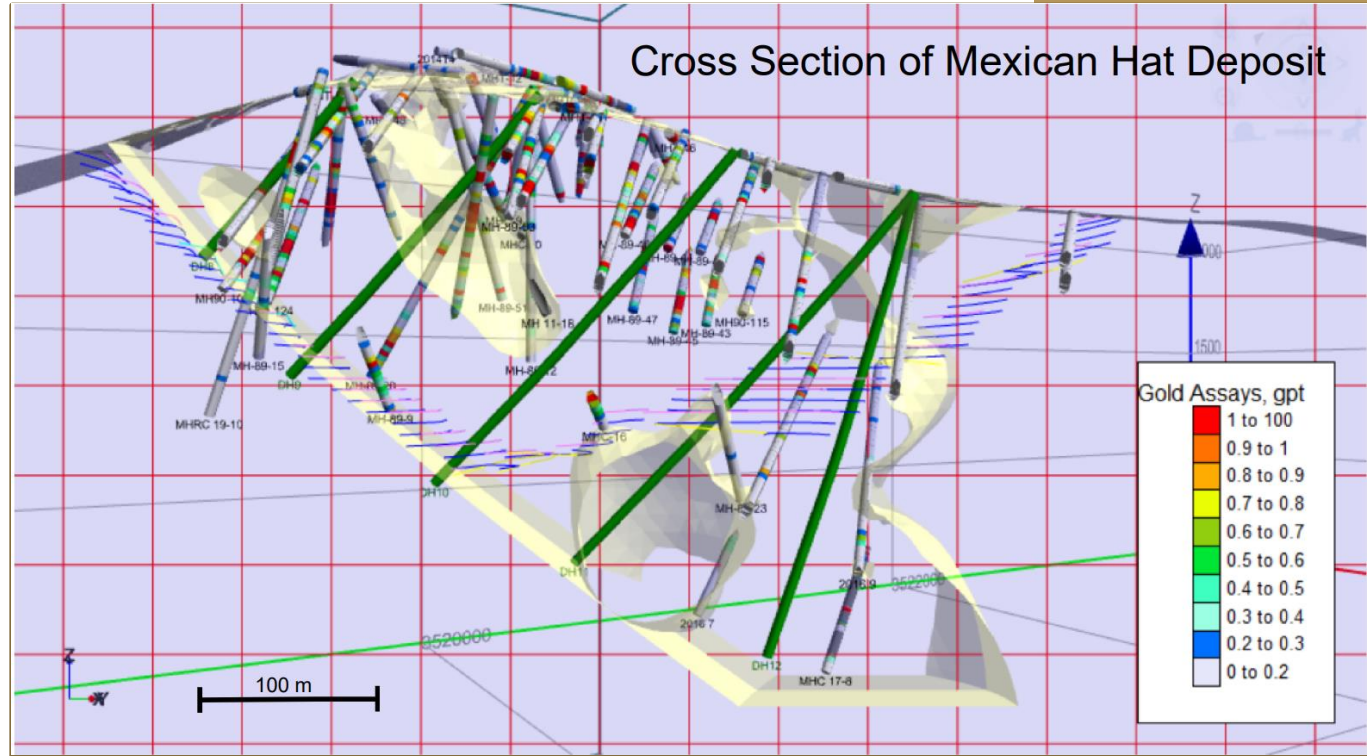
Mexican Hat Constrained Pits



- Mexican Hat Mine development envisions two pits.
- The southeast pit will be mined first, followed by the larger pit to the north.

Cross Section of Deposit

- Section 30/90 of Mexican Hat Deposit showing all drill holes with assays
- 2022 planned drill holes marked in green



Current Resource Estimate

An updated Mineral Resource Estimate prepared by **Tetra Tech Inc. (Tetra Tech)** and **DRW Geological Consultants Ltd.** with an effective date of June 22, 2020 was used in the PEA.

Category	Cut-off (g/t Au)	Grade (Au, g/t)	Tonnes	Gold Oz	Strip Ratio
Inferred	0.20	0.58	36,733,000	688,000	2.36

- ✓ The Mineral Resource Estimate has been constrained to a preliminary optimized pit shell, using the following parameters: SG = 2.57 gm/cc based on test work, mining costs = \$1.50/tonne, mining recovery = 98%, mining dilution = 2%, process cost = \$3.25 per tonne, G&A = \$0.55 per tonne, gold price = \$1,375 per troy ounce, throughput at 15,000 tpd., discount rate = 5%. A cost of \$0.03 was added per bench to the mining cost below the existing level surface.
- ✓ A top cut of 32 gpt gold is applied to all zones except Zone 6 which has a top cut of 50 gpt gold.
- ✓ Mineral Resources have been calculated using the Inverse Distance Squared method
- ✓ Mineral Resources constrained to optimized pit shells are not mineral reserves and do not have demonstrated economic viability.
- ✓ Conforms to NI 43-101, Companion Policy 43-101CP, and the CIM Definition Standards for Mineral Resources and Mineral Reserves. Inferred Resources have been estimated from geological evidence and limited sampling and must be treated with a lower level of confidence than Measured and Indicated Resources.
- ✓ All numbers are rounded. Overall numbers may not be exact due to rounding.
- ✓ There are no known legal, political, environmental, or other risks that could materially affect the potential development of the mineral resources.

[CLICK HERE FOR FULL TECHNICAL REPORT](#)

Infrastructure & Permitting

- ✓ Paved road access from Old Ghost Town Road
- ✓ The Courtland-Pearce, Ghost Town Trail Road extends along the western project area along with an active power line
- ✓ Cochise power plant (Apache) located 30 miles from Mexican Hat Project
- ✓ Water accessibility from privately-owned and operated wells in the vicinity
- ✓ The Towns of Willcox, Benson and Sierra Vista are the supply centers of Cochise County and serve as distribution hubs for agricultural, tourism and mineral industries providing accommodations, equipment and supplies, plus an available, knowledgeable work force
- ✓ Baseline Studies Commencing in 2022 include:
 - Groundwater sampling
 - Air quality sampling
 - Wildlife analysis
 - Archaeological analysis



Road to Old Ghost Town, Arizona



Cochise Power Plant, Arizona

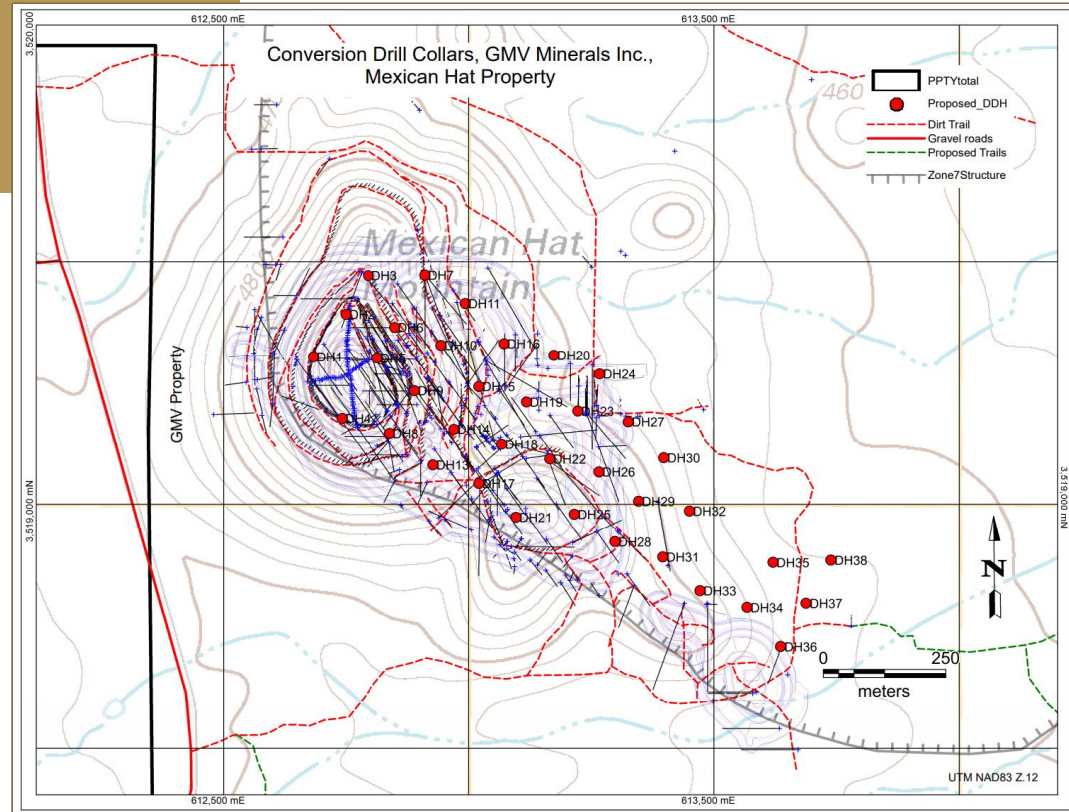
Mexican Hat Timeline – 2022/2023

	Q1	Q2	Q3	Q4
Baseline Studies Continue water sampling, plus update of hydrologic, cultural, and environmental studies for permitting				
Conversion Drilling 30-35 drill holes, 7,000m of in-fill drilling to convert inferred mineralization to measured & indicated				
Geotechnical Drilling				

Conversion Drill Program

A total of up to 38 diamond drill holes are designed to provide full coverage of the entire Mexican Hat deposit at 100 m +/- centers. This will:

- Assist in the QA/QC of the historic drill results by twining or near twinning a large number of holes enabling conversion of some of the Inferred Resource into Indicated or Measured Resources
- Provide some geotechnical data and potential water flows to enable more specific engineered pit design



Board & Management

Management

Ian Klassen, B.A. (Hons.)
President & CEO

Michele Pillon
Chief Financial Officer

Dr. D.R. Webb, B.A.Sc.
(Engineering), M.Sc. Ph.D., P.Geo.
Acting Project Manager

Board of Directors

Alistair MacLennan
Chairman

Ian Klassen, B.A. (Hons.)
President & CEO

Douglas A. Perkins, B.Sc., FGAC
Independent Director

Carl Hale, P.Geo
Independent Director

Robert Coltura
Independent Director

Advisors

Dr. Roger Newell, Ph.D
(former Chief Geologist,
Newmont Mining)

Joel Schneyer, M.S., M.A., B.A
Managing Partner, Minerals &
Mining-Capstone Headwaters

Investment Highlights



100% interest in Mexican Hat Gold Property in a key, mining-friendly jurisdiction of the USA



New PEA completed 10-year mine life and greatly reduced capex



Over **688,000 ounces of gold** in an Inferred Resource with updated resource calculation



Excellent metallurgical results with a low strip ratio



Project is open for **resource expansion**, drilling to commence H2 2022



Very low market capitalization with a **tightly held share structure**

Appendix

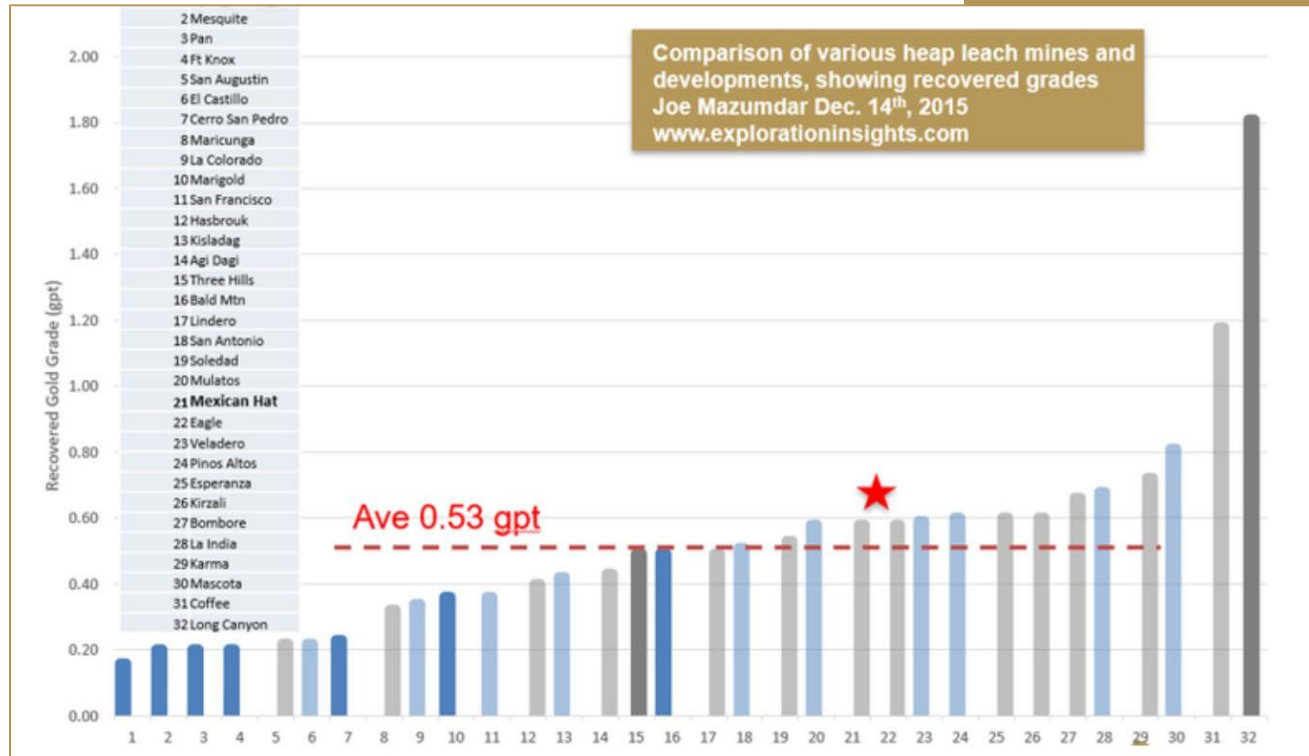


Heap Leach Benefits



- ✓ Well established process
- ✓ Low capital investment and operating costs
- ✓ Fast payback
- ✓ No tailings disposal
- ✓ Lower energy and water requirements
- ✓ Viable in a wide range of climates
- ✓ Simple setup and operation

Recovered Gold Grades of Selected Heap Leach Gold Mines



Notes

Notes



President & CEO
Ian Klassen, B.A. (Hons.)
(604) 899-0106
info@gmvminerals.com

Head Office
Suite 280-1090 W Georgia St.
Vancouver, BC. V6E 3V7
gmvmminerals.com